

# 2018 International Crosstie and Fastening System Symposium

Opening Remarks

---

**Tuesday 15 May 2018**

Partnering organizations:



American Concrete Institute  
*Always advancing*



# Welcome – We are excited you are here!



**2018** International  
Crosstie & Fastening  
System Symposium

# Safety Briefing

---



- ▶ **Emergency Exits** → Right and Left of room 1310
  - Reassemble on north side of Main Street (north of Yeh Student Center)
  - Use the buddy system, look out for your neighbor
- ▶ In the event of **severe weather** please take shelter in basement of Newmark Lab
  - Stairs located inside double doors near restroom
  - No basement under Yeh Center
  - UIUC personnel will receive text alerts
- ▶ Who is **CPR Certified**?
- ▶ **AED** in Newmark Crane Bay (Near Center of Bay)

# Safety Briefing (Cont.)

---



- ▶ If walking through the Newmark Crane Bay – Please use caution as it is an active laboratory
- ▶ Please push in your chairs and note any tripping hazards such as power cords
- ▶ No smoking anywhere on UIUC's campus
- ▶ Campus Phone Emergency Number: 11911
  - For cell phone users, please dial 911
  - Assign designated callers (Lima and Dersch)
- ▶ Include any specific medical conditions or allergies on a piece of paper in your right front pants pocket
- ▶ Symposium Location: **Newmark Civil Eng. Lab, Yeh Student Center, 205 N. Mathews Ave, Urbana, IL**
  - Also listed on back of Symposium program

# Active Shooter Threat Procedures

---



**Run** - Leaving the area quickly is the best option if it is safe to do so.



**Hide** - When you can't or don't want to run, take shelter indoors.



**Fight** - As a last resort, you may need to fight to increase your chances of survival.

# Thank You 2018 Sponsors



Special thanks to RTA and ACI  
for your organizational partnership



# What's New This Year?

---



- ▶ Expanded Rail Transit Content
  - Lectern session
  - Many agencies and suppliers present
- ▶ Expanded Composite Crosstie Content
- ▶ voestalpine Nortrak and Getzner tour
  - New manufacturing process
- ▶ RAIL Tour
  - New research on rail joints, ballast mats, under tie pads



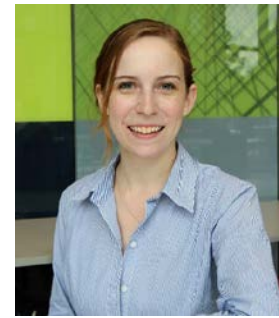
## TECHNICAL RESEARCH STAFF

- ▶ Marcus Dersch –  
*Senior Research Engineer*
- ▶ Arthur Lima –  
*Experimentation Manager*



## ADMINISTRATIVE SUPPORT STAFF

- ▶ Tim Gress –  
*Managing Director*
- ▶ Lilabeth (LB) Frye –  
*Rail Program Coordinator*
- ▶ Emma Ehrenhart –  
*Rail Program Coordinator and  
Symposium Organizer*



# Symposium Program Changes

---



## ▶ None currently

## ▶ Concurrent Sessions!

- We have two sets of parallel sessions:
  - Wednesday morning
    - Slightly different start times (8:00 and 8:30 AM)
  - Thursday morning
- Concurrent room is 2311 (immediately above)

# Symposium Administrative Items

---

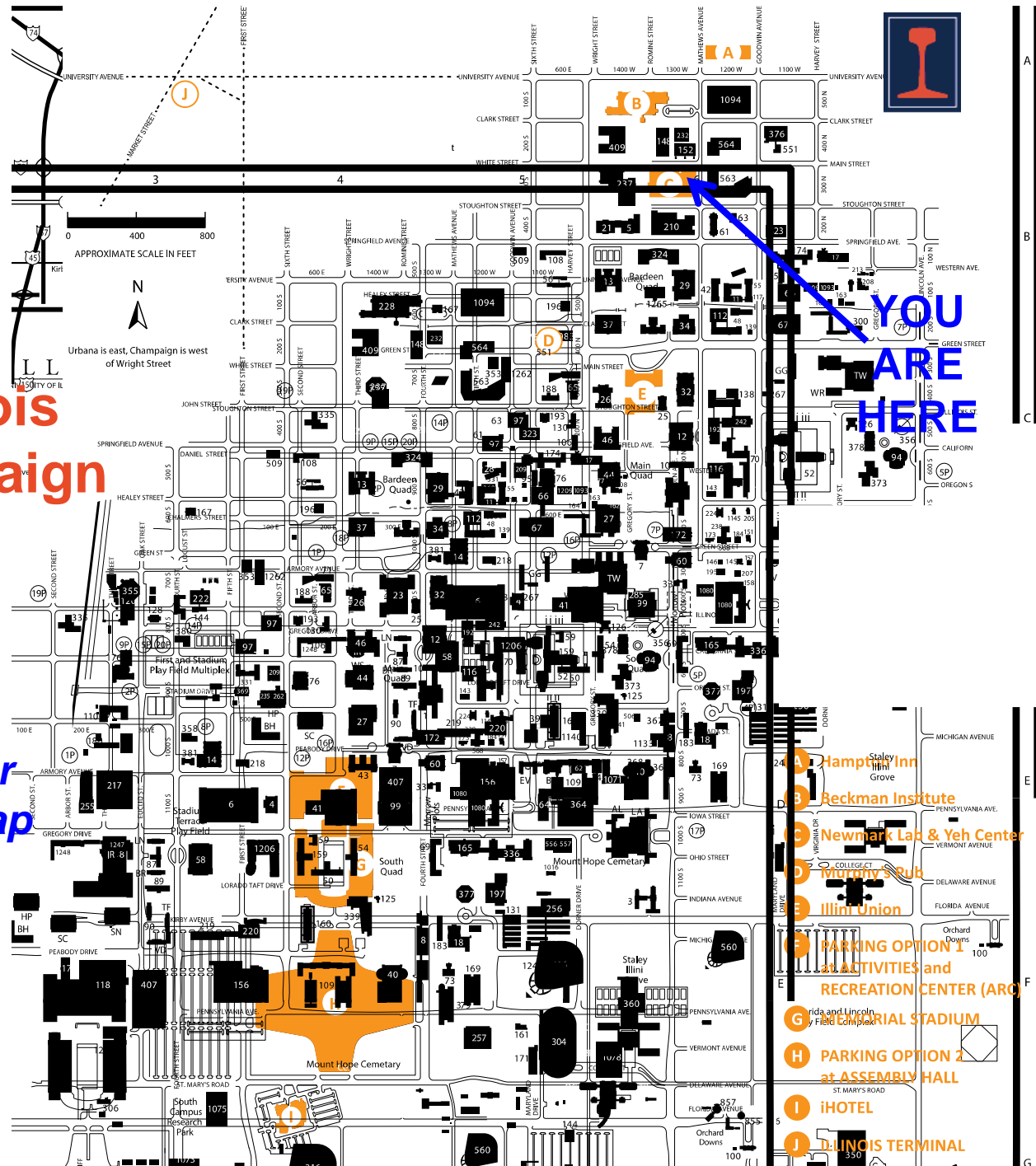


- ▶ Overview of Newmark Civil Engineering Lab (NCEL) and the Yeh Student Center
  - Primary Meeting Room: 1310 (MOST Technical Sessions)
  - Additional Meeting Room: 2311 (Used for 2 Parallel Sessions)
  - Conference Room: 3350 [Reserve at registration desk]
  - Breaks on 1<sup>st</sup> Floor in Yeh Center Lobby
  
- ▶ Wireless Internet Access info is on Page 4 of your program
  
- ▶ Uploading Symposium PPTs → Please see the registration booth if you haven't already uploaded your PPT
  - **20 minutes maximum per presentation, INCLUDING questions**
  
- ▶ Lunch Today in the Electrical and Computer Engineering (ECE) Building to our Northwest → **Follow RailTEC student guides**

# University of Illinois at Urbana-Champaign

## Campus Map

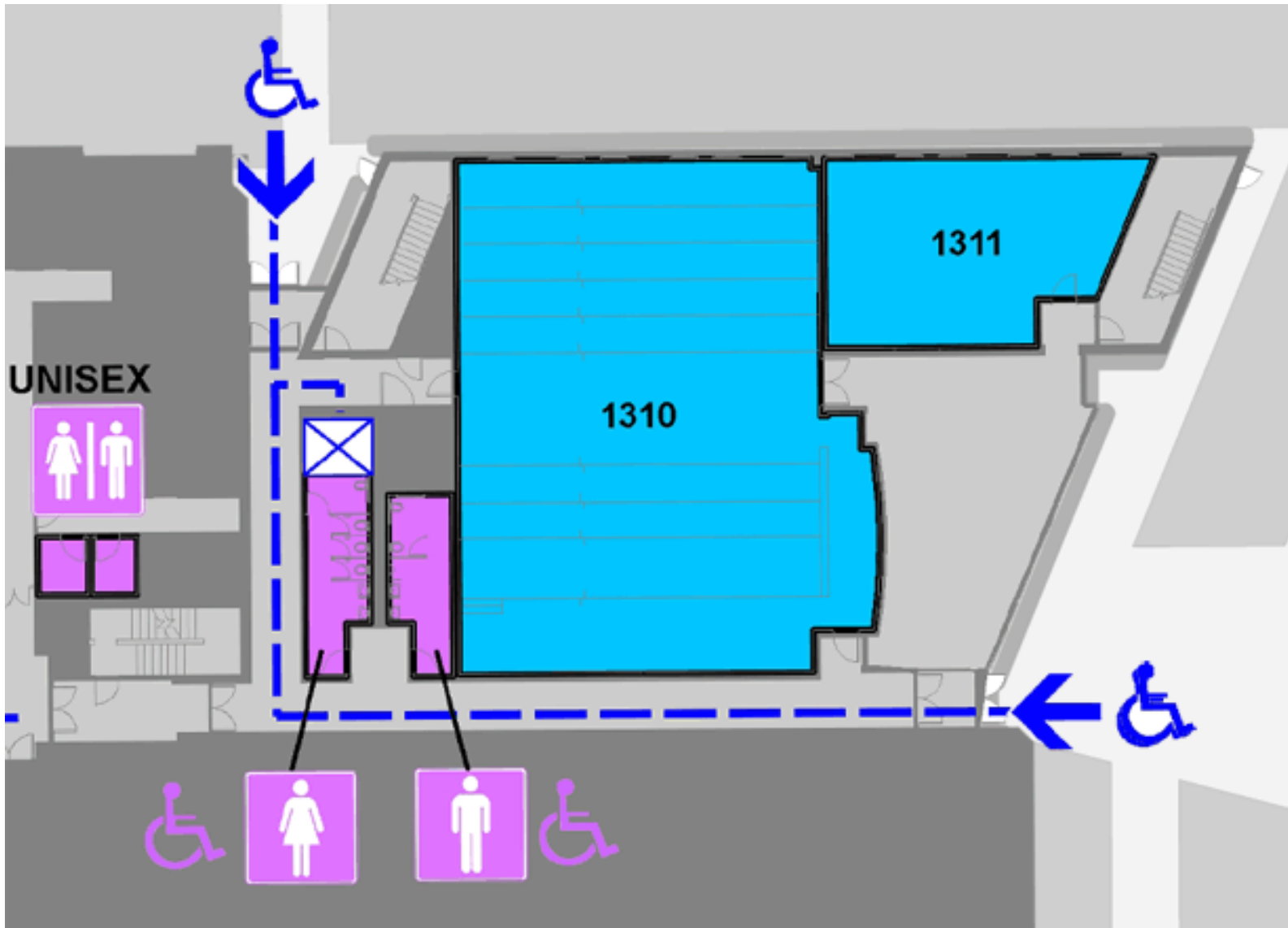
*Note: See Page 5 of your  
Program for Campus Map*



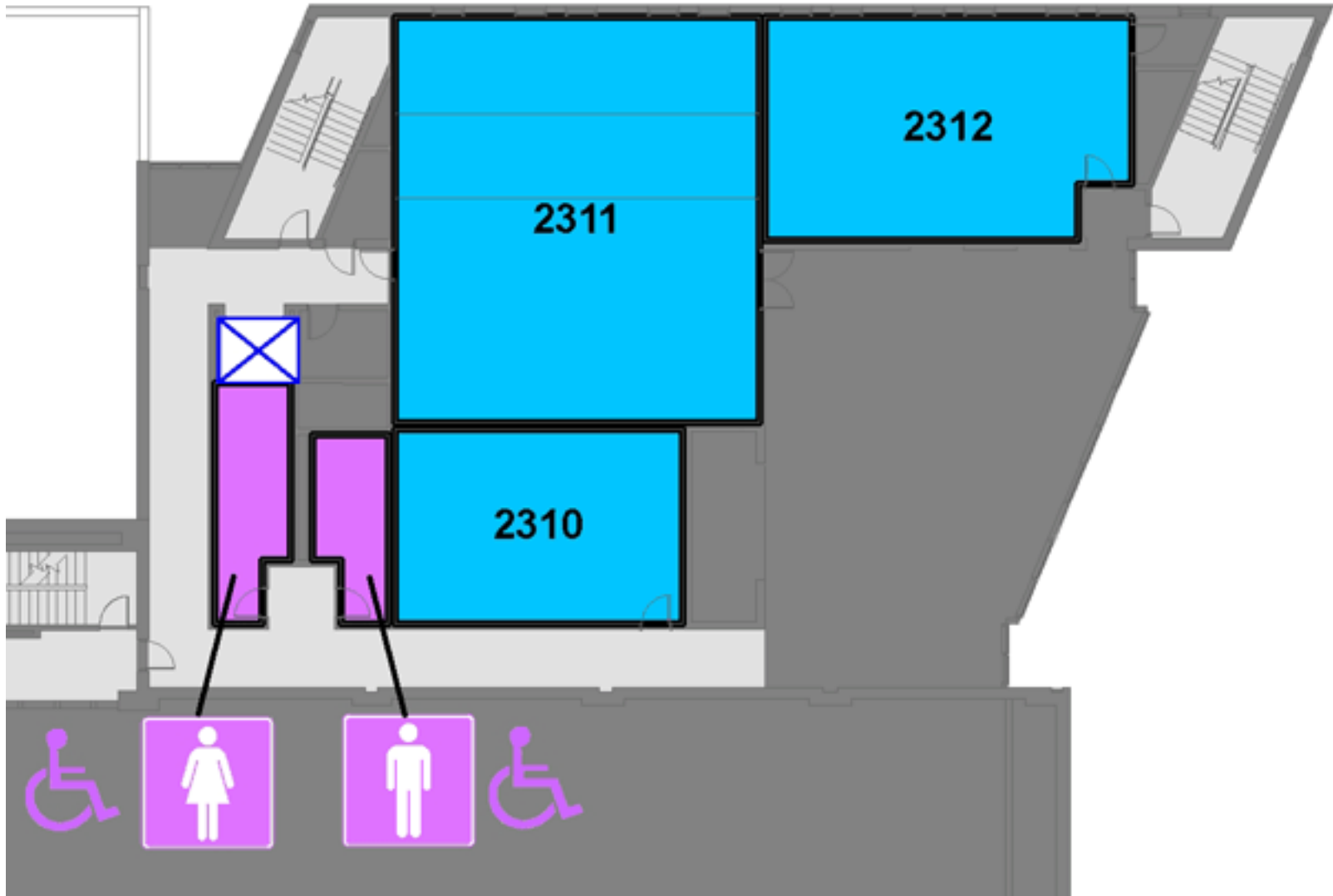
**YOU  
ARE  
HERE**

- A Hampton Inn
- B Beckman Institute
- C Newmark Lab & Yeh Center
- D William's Rub
- E Illini Union
- F PARKING OPTION 1 at ACTIVITIES and RECREATION CENTER (ARC)
- G Rida and Lincoln Field CENTRAL STADIUM
- H PARKING OPTION 2 at ASSEMBLY HALL
- I IHOTEL
- J ILLINOIS TERMINAL

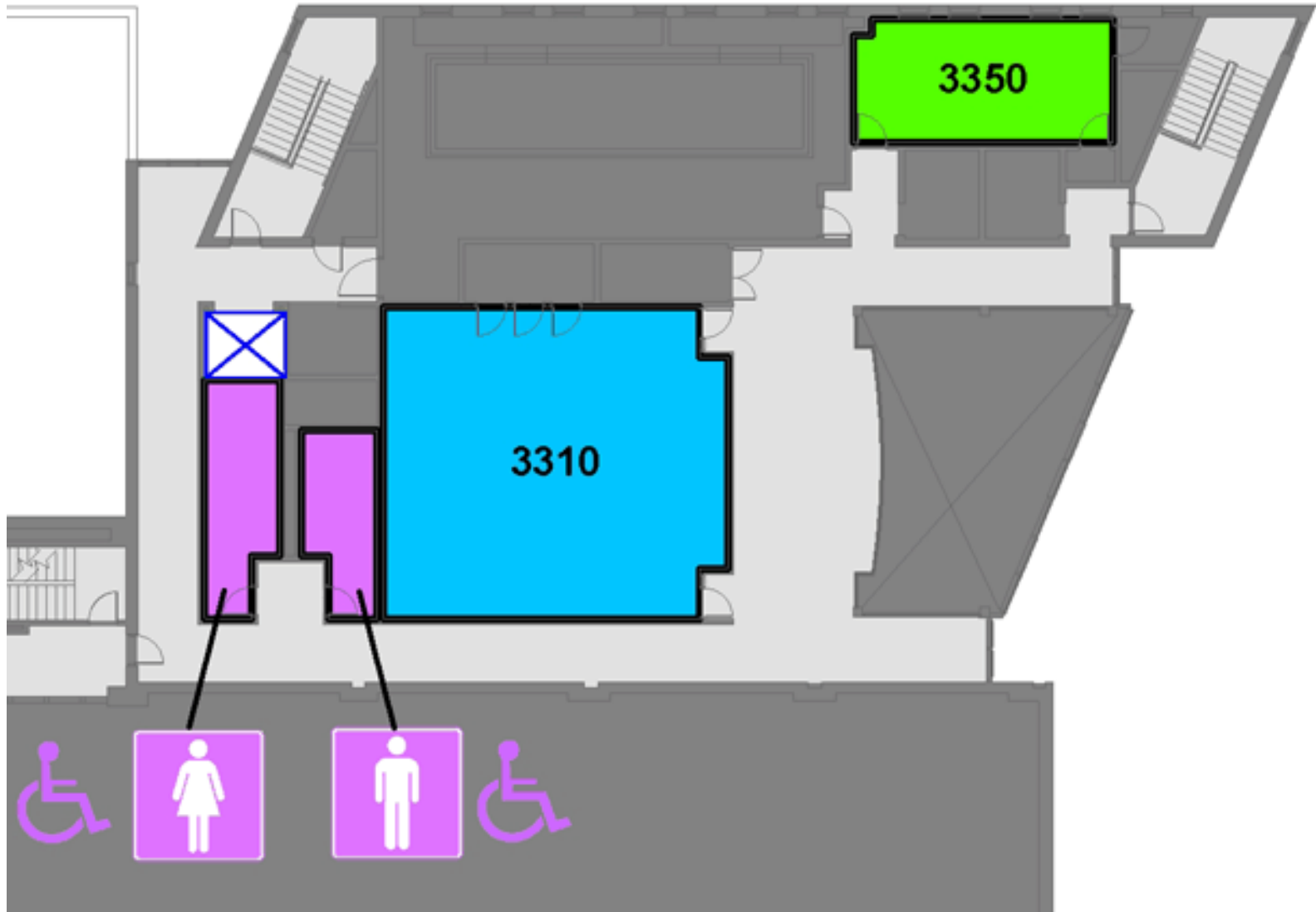
# Yeh Center – First Floor



# Yeh Center – Second Floor



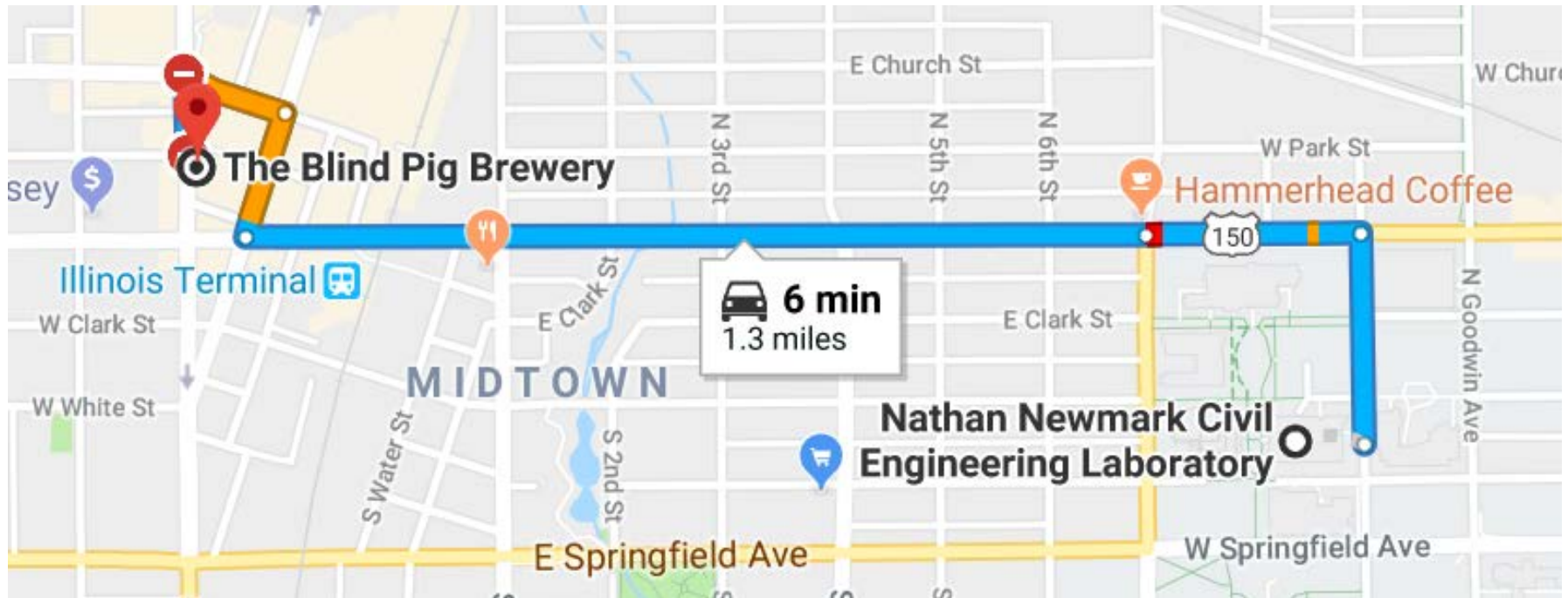
# Yeh Center – Third Floor



# Reception Today at Blind Pig Brewery



- ▶ Today from 5:45 – 7:30 PM
- ▶ Located in Downtown Champaign
- ▶ Address:  
120 N Neil St.  
Champaign, IL 61820
- ▶ **Bring Nametags!**
- ▶ Food and Beverage
  - Open Bar
  - Heavy Appetizers
- ▶ Many restaurants nearby



# Symposium Technical Tour – Schedule

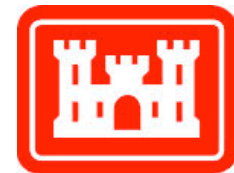


- **Schedule:**
- Bus 1 (voestalpine Nortrak, Getzner and RAIL)**
- |               |   |
|---------------|---|
| 12:30-1:30 PM | Travel from Yeh Center to voestalpine Nortrak Decatur, IL |
| 1:30-2:45 PM  | Tour voestalpine Nortrak Decatur                          |
| 2:45-3:45 PM  | Travel from voestalpine Nortrak Decatur to RAIL           |
| 3:45-4:45 PM  | Tour RAIL   |
| 4:45-5:15 PM  | Travel from RAIL to Yeh Center                            |
| 5:15 PM       | Arrive at Yeh Center                                      |
- Bus 2 (RAIL, voestalpine Nortrak, and Getzner)**
- |               |   |
|---------------|---|
| 12:30-1:00 PM | Travel from Yeh Center to RAIL                        |
| 1:00-2:00 PM  | Tour RAIL   |
| 2:00-3:00 PM  | Travel from RAIL to voestalpine Nortrak Decatur, IL   |
| 3:00-4:15 PM  | Tour voestalpine Nortrak Decatur                      |
| 4:15-5:15 PM  | Travel from voestalpine Nortrak Decatur to Yeh Center |
| 5:15 PM       | Arrive at Yeh Center                                  |
- Bus 3 (RAIL ONLY)**
- |              |                                |
|--------------|--------------------------------|
| 1:45-2:15 PM | Travel from Yeh Center to RAIL |
| 2:15-3:30 PM | Tour RAIL                      |
| 3:30-4:00 PM | Travel from RAIL to Yeh Center |
| 4:00 PM      | Arrive at Yeh Center           |
- Please sign your name on one of three sheets:
1. RAIL, voestalpine Nortrak, and Getzner (Bus 1 or 2)
  2. RAIL ONLY (Bus 3)
  3. Not attending technical tour

# Symposium Technical Tour - Logistics



- ▶ RAIL Laboratory (Champaign, IL)
  - Steel-toed boots are **required**
  - Safety glasses and hard hats will be provided upon arrival
  - Make certain you are on the cleared list:
    - Non US Citizens – Advance clearance required as a part of registration (ask Registration Booth if in doubt)
  - Please bring proper identification tomorrow:
    - Non US Citizens – Bring Passport
    - US Citizens – Bring Driver's License
- ▶ voestalpine Nortrak and Getzner (Decatur, IL)
  - Steel-toed boots are **required**
  - Safety glasses and hard hats will be provided upon arrival
  - **Sign BOTH waivers today and return to registration booth**
- ▶ See Page 9 of Program for more info
- ▶ Special thanks:

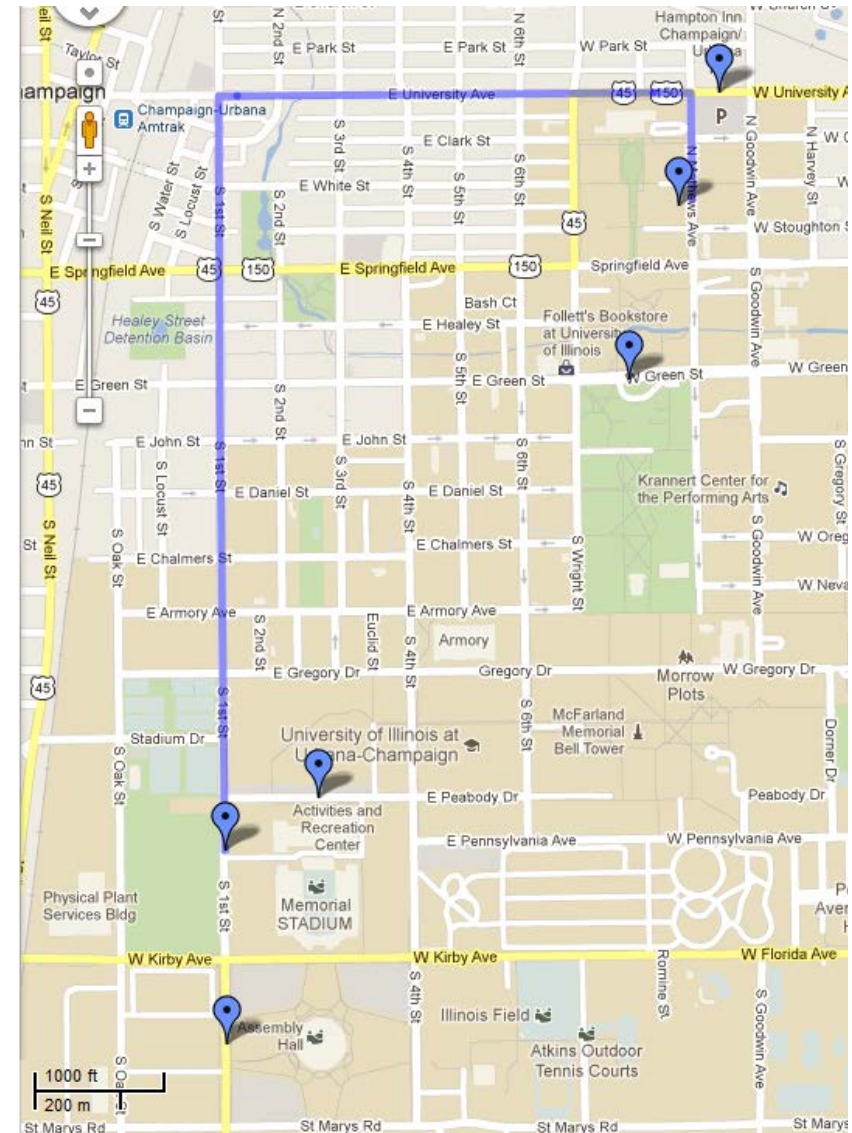


**US Army Corps  
of Engineers®**

# Symposium Dinner at Memorial Stadium



- ▶ Busses will leave from outside Yeh Center at 5:45 PM
- ▶ If you drive, see Page 13 of your program for parking options and information
- ▶ Enter Memorial Stadium from the west side, Gate 16
- ▶ Go to 6<sup>th</sup> Floor to the 77 Club
- ▶ Schedule
  - Social Hour at 6:00 PM
  - Dinner at 7:00 PM
  - Prof. David A. Lange (ACI President) Remarks at approximately 7:30 PM



# Current RailTEC Infrastructure Sponsors



- ▶ **Governmental Agency**
  - Federal Railroad Administration (FRA)
  - Federal Transit Administration (FTA)
- ▶ **Railroad / Owner**
  - New York City Transit (NYCT)
  - Amtrak
  - Washington Metropolitan Area Transit Authority (WMATA)
- ▶ **Crosstie Suppliers**
  - GIC
  - Resource Fiber
- ▶ **Fastening System Supplier**
  - Progress Rail (PRS)
- ▶ **Miscellaneous**
  - National University Rail Center (NURail)



U.S. Department of Transportation  
**Federal Railroad Administration**



U.S. Department of Transportation  
**Federal Transit Administration**



**New York City Transit**



**ResourceFiber**<sup>®</sup>  
BAMBOO FIBER FOR INDUSTRY



by Nortrak

**Progress Rail**

*A Caterpillar Company*

**NURail Center**

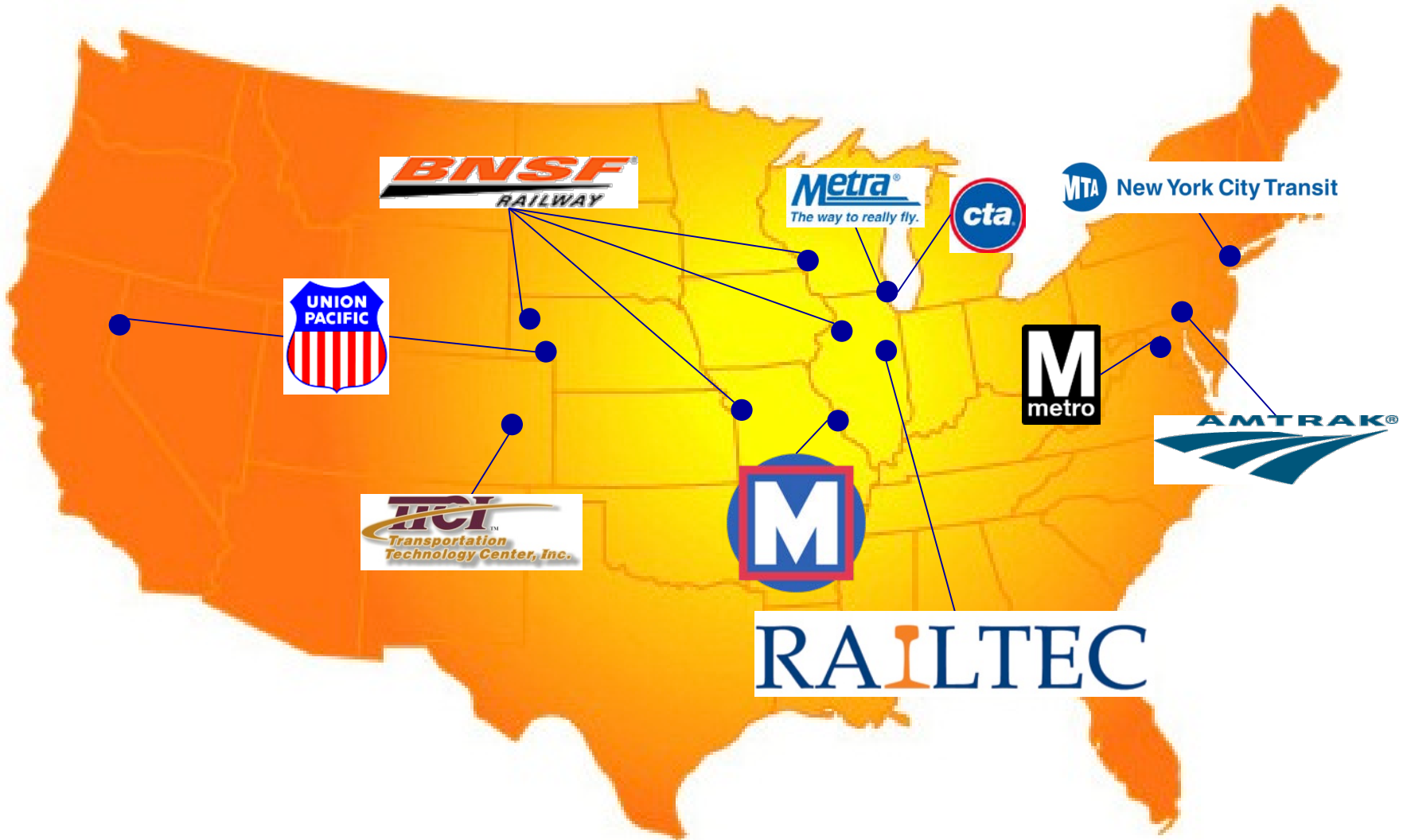
# FRA, FTA, and Amtrak Industry Partners



New York City Transit



# Field and Lab Experimentation Locations



# UIUC Internship and Job Placements



## Class 1 RRs



## Trade Assoc.



## Transit Agencies



## Academic Institutions



UNIVERSITY OF  
SOUTH CAROLINA

WESTERN NEW ENGLAND  
UNIVERSITY **WNE**

## Suppliers



## Consulting Engineering



SIMPSON GUMPERTZ & HEGER

Engineering of Structures  
and Building Enclosures



CREATING BRIDGES AS ART



Structural Engineers



# Thanks for Attending and Welcome!

---

