

Development of Railroad/Highway Consolidation Rating Formula

Iowa DOT
In cooperation with
The Institute for
Transportation at
Iowa State
University
(InTrans)



IOWA RAILROAD FACTS

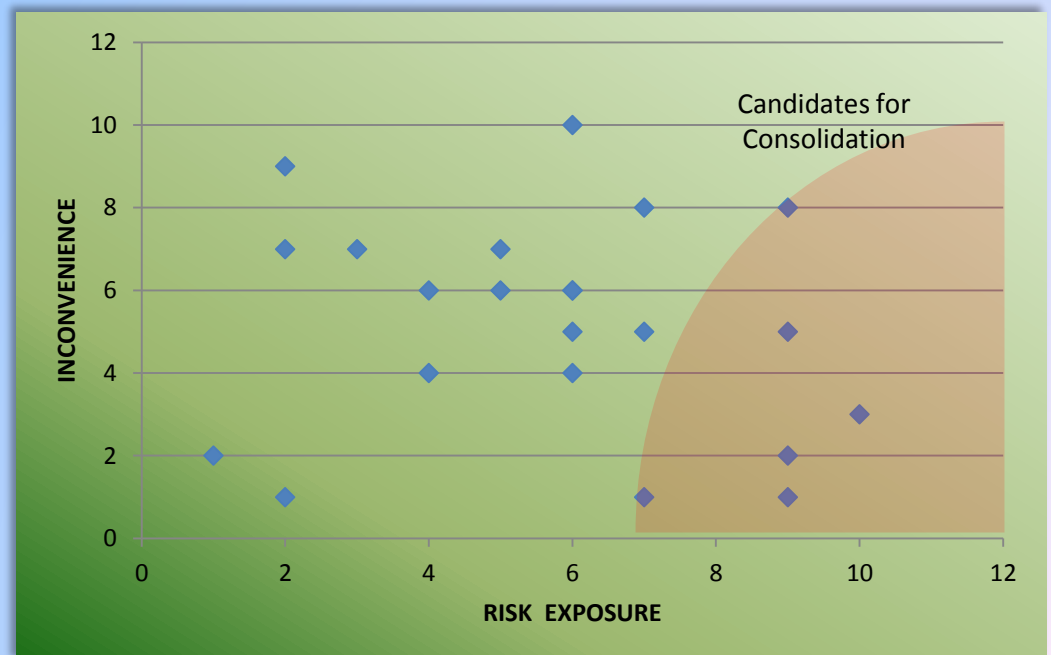
- $\approx 4,300$ public crossings
- Over 5M vehicles/day
- 50 collisions/year

COMPELLING CONDITIONS

- Every crossing is a risk
- Non-Regulatory State
- Public arena

WHAT'S NEW?

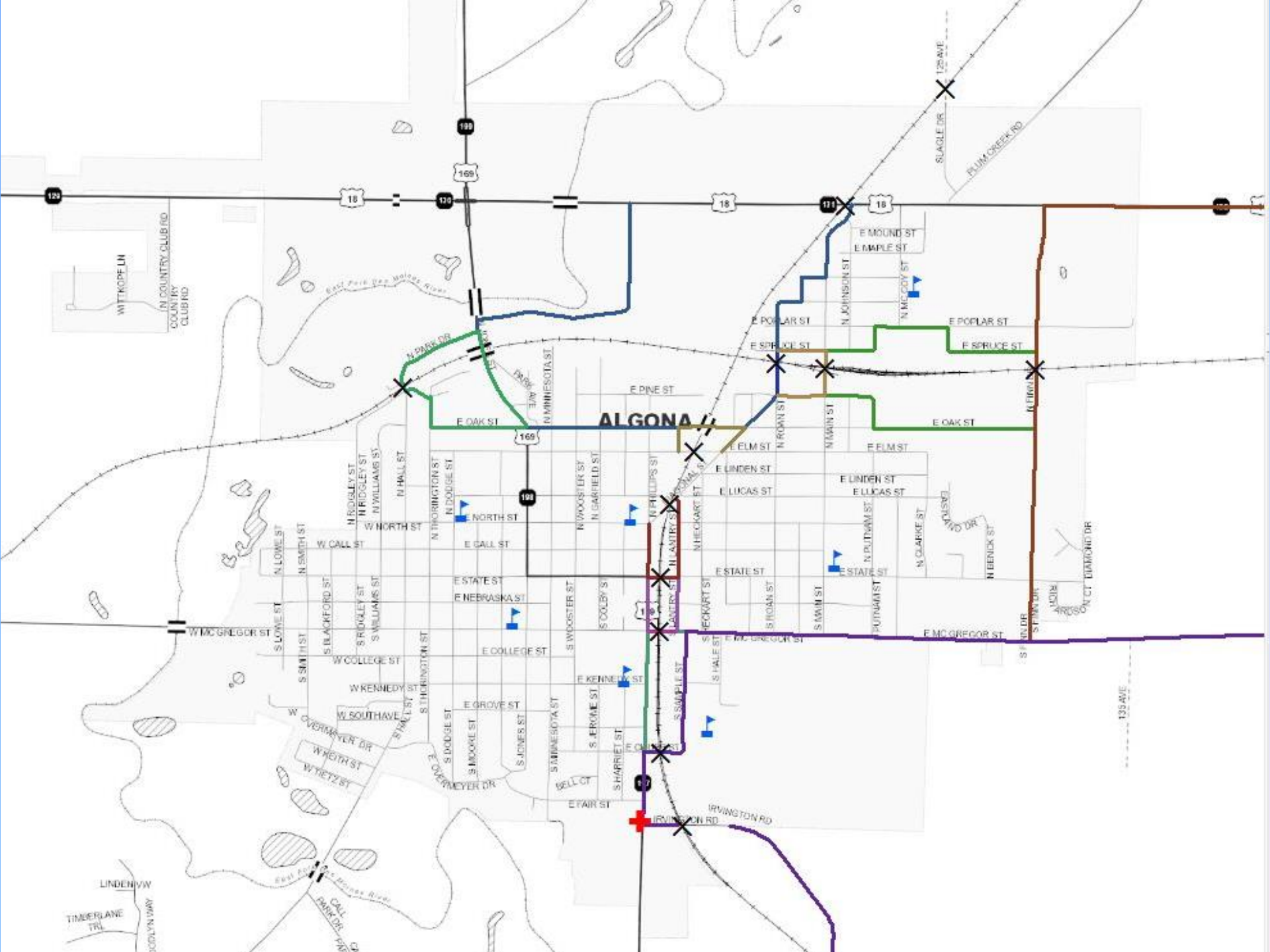
- Previously only risk and crash history
- This will balance risk with “inconvenience”
- GIS based
- This is a TOOL!

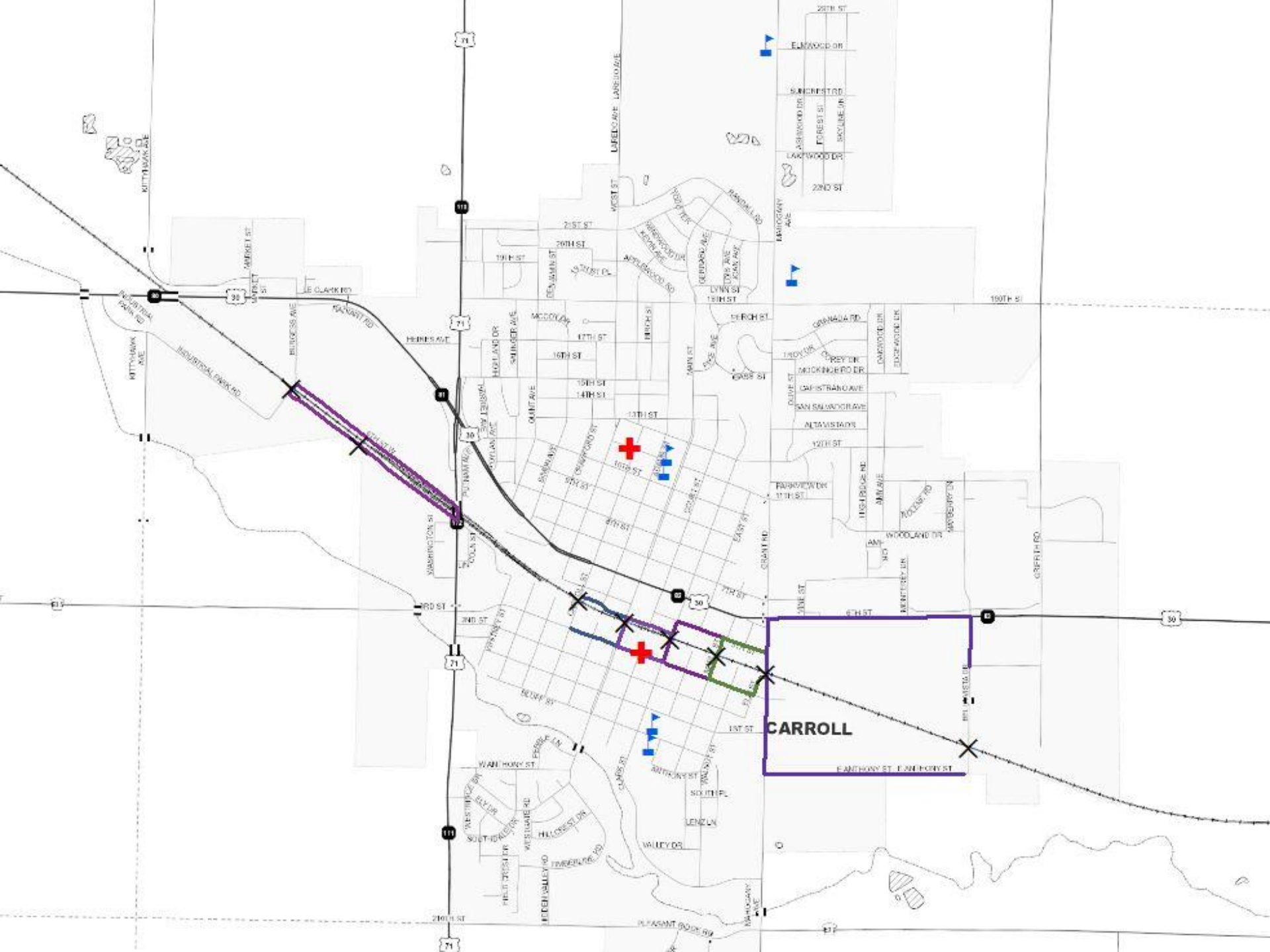


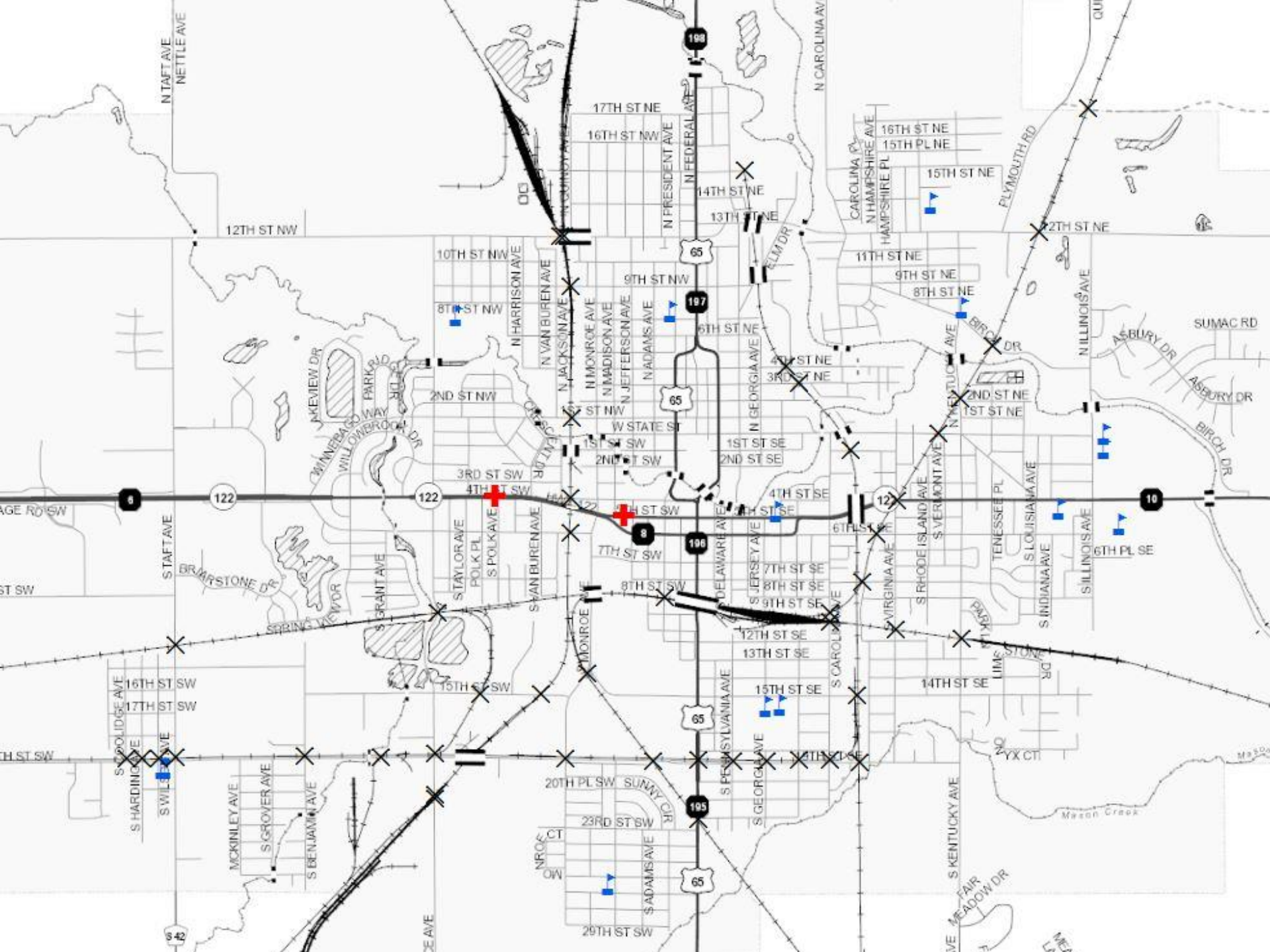
WHAT IS “INCONVENIENCE”

The amount of impact vs. perception

- Out of distance travel
- Emergency services
- Schools
- Added safety concerns
 - Amount of traffic
 - Crash history on the alternate route







VARIABLES CONSIDERED

- *Proximity to an intersection*
- *Proximity to another railroad highway crossing*
- *Truck traffic (Note: Must investigate availability on all public roads.)*
- *Population and demographic data (Possible source: US Census Bureau.)*
- *Trip generators (Possible sources: Local and state travel demand models.)*
- *Length of train (Note: May be very difficult to obtain.)*
- *Tonnage by segment (Note: This may potentially be used to back calculate number of rail cars.)*
- *Crash history and predicted risk*
- *Trip purpose (Note: Convenience factor may be weighted based on trip purpose, vehicle type or user, e.g. truck, public, EMS, etc.)*
- *Skew angle of railroad to roadway*
- *Humped crossing, with respect to percent grade*
- *Sight distance – stop and approach*
- *Non-motorist (pedestrian and bicycle) activity and/or presence of sidewalks and bike paths*
- *Proximity to transit pickup and drop off location(s)*
- *“Projected” rail traffic volume*

ISSUES WITH VARIABLES

- Dataset integrity/availability
- Feasibility
- Defining distances

WHAT IS LEFT?

- Weighting the variables
- Stakeholder meetings
- Corridor testing
- First run by January 1, 2015

QUESTIONS??

Iowa DOT sponsor: Phillip Meraz

Phillip.meraz@dot.iowa.gov

InTrans Principle Investigator: Zach Hans

zhans@iastate.edu

InTrans Co-Principle Investigator: Chris Albrecht

calbrech@iastate.edu